

**Lobstering Is Prohibited  
In The Following Areas:**

- **Artificial Habitats in State Waters**
- **Biscayne Bay/Card Sound Spiny Lobster Sanctuary** (closed only to the harvest of spiny lobster)
- **Everglades and Dry Tortugas National Parks**
- **Florida Keys National Marine Sanctuary**  
The following no-take areas are marked by 30" diameter round yellow boundary buoys:
  - Sanctuary Preservation Areas (SPAs)
  - Carysfort Reef
  - Elbow
  - Key Largo Dry Rocks
  - Grecian Rocks
  - French Reef
  - Molasses Reef
  - Conch Reef
  - Hen and Chickens
  - Davis Reef
  - Cheeca Rocks
  - Alligator Reef
  - Coffins Patch
  - Sombrero Key
  - Looe Key
  - Newfound Harbor
  - Eastern Dry Rocks
  - Rock Key
  - Sand Key
- Special-use Research Only Areas
  - Conch Reef
  - Tennessee Reef
  - Looe Key Patch Reef
  - Eastern Sambo
- Ecological Reserves
  - Western Sambo
  - Tortugas (not currently marked, refer to GPS coordinates)
- **John Pennekamp Coral Reef State Park**
  - All of John Pennekamp Coral Reef State Park is closed during the two-day Sport Season to the harvest of spiny lobster.
  - During the Regular Season no person shall harvest any lobster species from or within any coral formation (patch reef).
  - The following “Pennekamp Lobster Exclusion Zones” are closed during the Regular Season to the harvest of any lobster species and are marked with white and orange spar buoys:
    - Turtle Rocks
    - Basin Hills East
    - Higdon’s Reef
    - Mosquito Bank North
    - Three Sisters North
    - Basin Hills North
    - Basin Hills South
    - Cannon Patch
    - Mosquito Bank South East
    - Three Sisters South

**Facts For All Seasons:  
What To Know Before You Go. . .**

**Possession:** Lobster must be of legal size before they are in possession. NOTE: You may not have lobster in your possession in Everglades National Park.

**Bag Limits:** The Federal bag limit cannot be combined with the State bag limit.

**Egg-bearing (berried) lobster regardless of species must be released unharmed.** Stripping egg-bearing females of eggs, and possession of spiny or ridged slipper lobster tails from which eggs have been removed is prohibited. Eggs are an orange, yellow, brown, or red mass found covering the underside of the lobster’s tail.

**Coral is protected** from damage and removal in State and Federal waters. Do NOT touch, hold on to, stand on, break or otherwise harm coral. It is a fragile living animal.

**Gear:** Harvesting or attempting to harvest spiny lobster using any device that will or could puncture, penetrate, or crush the exoskeleton (shell) or the flesh of the lobster, and the use of such devices is prohibited.

“**Bully-netting**” is defined as using a circular frame attached at a right angle to the end of a pole and supporting a conical bag of webbing. Possession of bully nets is prohibited in Everglades National Park.

“**Hoop-netting**” is defined as using a frame, circular or otherwise, supporting a shallow bag of webbing and suspended by a line and bridles. Possession of hoop nets is prohibited in Everglades National Park.

“**Artificial Habitat**” is material (e.g. wood, metal, concrete, plastic) that has been placed to provide cover and habitat for spiny lobster. Does not include fishing gear allowed by FWC, Florida-DEP or Army Corps permitted artificial reefs (e.g. Duane, Eagle, Thunderbolt).

**License Requirements:** Recreational harvesters are required to possess a valid Florida Saltwater Fishing License with a current crawfish endorsement. Consult your license agent for exemptions.

**Spanish and slipper lobster** are closed year round to harvest in Key Largo and Looe Key Existing Management Areas, Everglades and Dry Tortugas National Parks, Florida Keys National Marine Sanctuary Ecological Reserves, Sanctuary Preservation Areas and Special-use Research Only Areas. During the Regular Season, they are closed to harvest in John Pennekamp Coral Reef State Park Lobster Exclusion Zones and from or within coral formations (patch reefs) within the Park.

**Commercial Lobster Traps:** It is a felony to molest, damage, or take lobster from traps in State or Federal waters.

**Dive Flag:** All divers and snorkelers in the water are required to prominently display a diver down flag. Slow to idle speed within 100 yards of a dive flag.

*This is not an official publication of lobster season rules and regulations.*

**Florida Fish and Wildlife Conservation Commission**

For questions on regulations or to report a violation  
 Division of Law Enforcement (888) 404-3922  
 Marathon Office (305) 289-2320  
 Division of Marine Fisheries (850) 487-0554

**South Atlantic Fishery Management Council**

(866) 723-6210

**Gulf of Mexico Fishery Management Council**

(888) 833-1844

**John Pennekamp Coral Reef State Park**

(305) 451-1202

**Everglades and Dry Tortugas National Parks**

(305) 242-7700

24-hour Dispatch (305) 242-7740

**Biscayne National Park** (305) 230-7275

**Florida Keys National Wildlife Refuges**

(305) 872-2239

**NOAA’s Florida Keys National Marine Sanctuary**

Key Largo Office (305) 852-7717  
 Key West Office (305) 809-4700

**Islamorada Village of Islands** (305) 664-6400

**City of Key Colony Beach** (305) 289-1212

**City of Marathon** (305) 743-0033

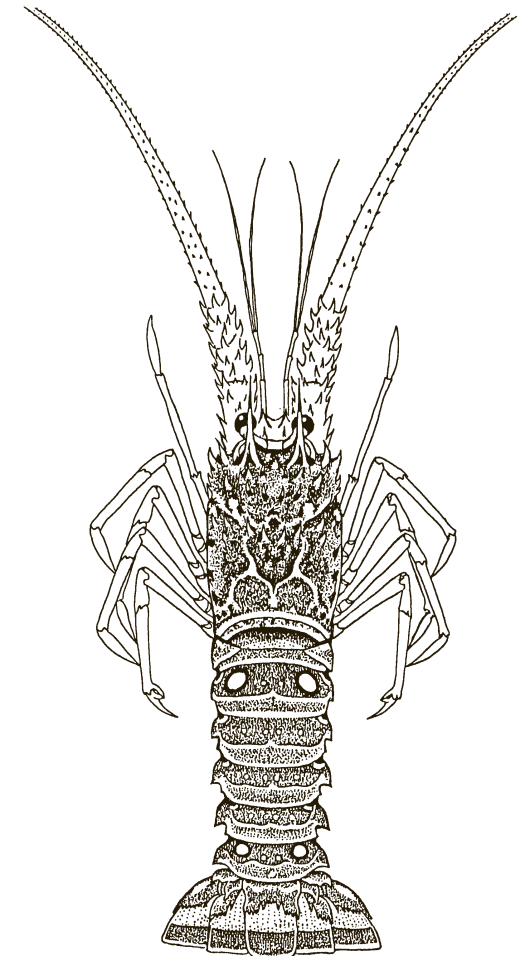
**Monroe County** (305) 289-2805

**Visit these Websites!**

floridakeys.noaa.gov  
 www.myfwc.com  
 www.nps.gov/ever  
 www.nps.gov/bisc  
 www.nps.gov/drto  
 www.nmfs.noaa.gov/  
 www.dep.state.fl.us/



Regulations for  
 Recreational Harvest  
 and  
 Lobster Information  
 for  
 Monroe County,  
 Florida



Florida Spiny Lobster (Crawfish)  
*Panulirus argus*

## Sport Season

The two-day Sport Lobster Season is always the last **consecutive** Wednesday and Thursday in July.

**Begins** at 12:01 a.m. on the first day of the sport season.

**Ends** at 12:00 midnight on the last day of the sport season.

### State and Federal Waters

**Bag Limit:** Six (6) per recreational harvester per day. The two-day total of twelve lobster per recreational harvester in Monroe County, adjacent Federal waters, and *Biscayne National Park* can only be possessed when transporting your catch by car on, or after, the second day.

**Diving at night** for lobster is NOT permitted in Monroe County and adjacent Federal waters. Bully-netting and hoop-netting is permitted at night. "Night" is 1 hour after official sunset to 1 hour before official sunrise.

### Prohibited Areas:

#### • Artificial Habitats in State Waters

• **Biscayne Bay/Card Sound Spiny Lobster Sanctuary** (closed only to the harvest of spiny lobster)

#### • Everglades and Dry Tortugas National Parks

• **Florida Keys National Marine Sanctuary**  
The following no-take areas are marked by 30" diameter round yellow boundary buoys:

- Sanctuary Preservation Areas (SPAs)
- Special-use Research Only Areas
- Ecological Reserves (Tortugas E.R. not currently marked, refer to GPS coordinates)

#### • John Pennekamp Coral Reef State Park

• All of John Pennekamp Coral Reef State Park is closed during the two-day Sport Season to the harvest of spiny lobster.

#### • Local Jurisdictions

The following areas are under local jurisdiction and subject to the following rules. Jurisdictions with an asterisk (\*) have extended the rule beyond the Sport Season- see notes below.

In the local jurisdictions, there is no diving or snorkeling within:

- 300 feet of improved residential or commercial shoreline
- any manmade or private canal
- any public or private marina

#### • City of Key Colony Beach \*

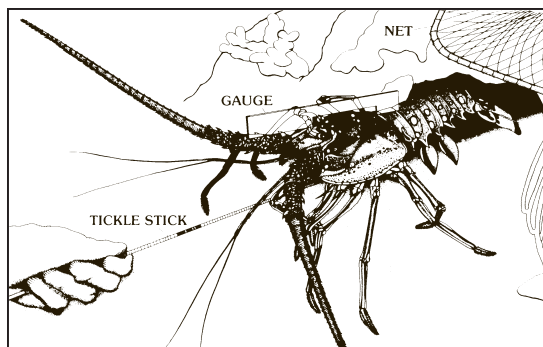
#### • City of Marathon

#### • Islamorada, Village of Islands

#### • Unincorporated Monroe County \*\*

\* In the City of Key Colony Beach this rule applies during the 4 days preceding Sport Season and continues until 10 days have elapsed after the opening of Regular Season.

\*\* In Unincorporated Monroe County this rule applies during the 3 days preceding Sport Season, the entirety of Sport Season and the first 5 days of Regular Season.



## Regular Season

The Regular Lobster Season is always August 6 through March 31.

**Begins** at 12:01 a.m. on August 6.

**Ends** at 12:00 midnight on March 31.

### State and Federal Waters

**Bag Limit:** Six (6) per recreational harvester per day

**Diving at night** for lobster is permitted.

### Prohibited Areas:

#### • Artificial Habitats in State Waters

• **Biscayne Bay/Card Sound Spiny Lobster Sanctuary** (closed only to the harvest of spiny lobster)

#### • Everglades and Dry Tortugas National Parks

#### • Florida Keys National Marine Sanctuary

The following no-take areas are marked by 30" diameter round yellow boundary buoys:

- Sanctuary Preservation Areas (SPAs)
- Special-use Research Only Areas
- Ecological Reserves (Tortugas E.R. not currently marked, refer to GPS coordinates)

#### • John Pennekamp Coral Reef State Park

• During the Regular Season no person shall harvest any lobster species from or within any coral formation (patch reef).

• The following "Pennekamp Lobster Exclusion Zones" are closed during the Regular Season to the harvest of any lobster species and are marked with white and orange spar buoys:

- |                       |                            |
|-----------------------|----------------------------|
| • Turtle Rocks        | • Basin Hills North        |
| • Basin Hills East    | • Basin Hills South        |
| • Higdon's Reef       | • Cannon Patch             |
| • Mosquito Bank North | • Mosquito Bank South East |
| • Three Sisters North | • Three Sisters South      |

#### • Key Colony Beach & Unincorporated Monroe County

• No diving or snorkeling within 300 feet of improved residential or commercial shoreline, any manmade or private canal, any public or private marina.

• This rule applies in the **City of Key Colony Beach** during the 4 days preceding Sport Season and continues until 10 days have elapsed after the opening of Regular Season.

• This rule applies in **Unincorporated Monroe County** during the 3 days preceding Sport Season, the entirety of Sport Season and the first 5 days of Regular Season.

## Measuring Lobster

- ✓ Each harvester must have a gauge made for measuring lobster while harvesting in the water.
- ✓ All lobster must be measured in the water and released unharmed if undersized.
- ✓ Lobster carapace must be greater than three (3) inches.
- ✓ All recreationally harvested lobster must remain in whole condition while at sea.
- ✓ Tails can only be separated on land. When the tail is separated from the body, it must be greater than 5-1/2 inches.

Lobster carapace must be greater than three (3) inches.

